

1. Perform an Initialization

Initializing the kiosk homes the X and Y position, which will reset the slot data to 0.

The screenshot displays the HAL Tester application window, which is organized into several functional panels:

- Output Panel:** Displays system status including "Inventory Stats" (UNKNOWN slots: 0, EMPTY slots: 3), hardware status, and boot logs. It includes buttons for "Clear Output", "Read Positions", and "Open Error Logs".
- Init Panel:** Contains buttons for "Init", "Exit" (highlighted with a red arrow), "Test Proteus Comm", "Home X", "Home Y", and "Reset Proteus".
- Boards Panel:** Includes buttons for "Read Picker Controller Inputs", "Read Aux Inputs", "Close Serial Port", "Turn Off Xchg Fan", "Board Test", and "Reset".
- Vend Door Panel:** Features buttons for "Rent", "Close", and "Check Status".
- Other Panel:** Contains buttons for "Put In bin", "Sync Unknowns", "Hardware Check", "Vertical Slot Test", "Show Timeouts", and "Read Controller Limits".
- Sensors Panel:** Shows six sensor indicators (1-6) with corresponding "Read", "On", and "Off" buttons.
- Rollers Panel:** Includes buttons for "In", "Out", "Stop", "Roll To Sensor", and a "Roll To Timeout(ms)" input field.
- Gripper Panel:** Features buttons for "Check for DVD In Slot", "Extend", "Retract", "Rent", "Sell", and "Close".
- Track Panel:** Includes buttons for "Open", "Close", and "Status".
- Door sensors and others Panel:** Contains buttons for "Query Door Sensors" and "Test deck 8".
- Camera Panel:** Includes buttons for "Snap", "Camera Settings and Preview", "Get and Read", "Turn Ringlight On", "Reset CCF Counter", and "Read Disk In Picker".
- Movements Panel:** Includes sections for "Source" (Deck/Slot), "Transfer Destination" (Deck/Slot), and various action buttons like "Go To", "Put", "Get", "Sync Slot", "Move to Vend", "Transfer", "Push DVD In Slot", "Vend DVD in Picker", "Pull DVD Into Picker", and "Put in Empty Slot".
- X/Y Moves Panel:** Includes directional buttons (Up, Down, Left, Right, Clockwise, Counter-clockwise) and a "Without Sensor Check" checkbox.
- Configuration Panel:** Includes buttons for "Update Configuration", "Deck Configuration", "Unknown Count", and "Configure Devices".
- Status Bar:** Displays "Tester Version: 1.12.1.64" and "Kiosk ID: 56177".

2. Enter Deck Configuration

HAL Tester

Output

Inventory Stats:
UNKNOWN slots: 0
EMPTY slots: 3
Hardware status ok.
The kiosk is configured for door sensors.
The kiosk is configured for a VMZ.
WARNING: jobs are currently running or pending.
Boot init ended with status: COMPLETED
Checking for bootstrap init.

Clear Output

Read Positions

Open Error Logs

Init

Init

Exit

Test Proteus Comm

Home X

Home Y

Reset Proteus

Boards

Read Picker Controller Inputs

Read Aux Inputs

Close Serial Port

Turn Off Xchgr Fan

Board Test

Reset

Vend Door

Rent

Close

Check Status

Other

Put In bin

Sync Unknowns

Hardware Check

Vertical Slot Test

Show Timeouts

Read Controller Limits

Sensors

1

2

3

4

5

6

Read

On

Off

Rollers

In

Out

Roll To Timeout(ms)

Stop

Roll To Sensor

Gripper

Check for DVD In Slot

Extend

Retract

Rent

Sell

Close

Track

Open

Close

Status

Door sensors and others.

Query Door Sensors

Test deck 8.

Camera

Snap

Camera Settings and Preview

Get and Read

Turn Ringlight On

Reset CCF Counter

Read Disk In Picker

Movements

Source

Deck

Slot

Transfer Destination

Deck

Slot

Go To

Put

Get

Sync Slot

Move to Vend

Transfer

Push DVD In Slot

Vend DVD in Picker

Pull DVD Into Picker

Put in Empty Slot

X/Y Moves

Clockwise

Up

Counter-clockwise

Left

Right

Down

☐ Without Sensor Check

X

Y

Get With Offset

Update

Deck Configuration

Unknown Count

Configure Devices

Tester Version:

1.12.1.64

Kiosk ID:

56177

3. Enter Fix Slot Alignment

The screenshot displays the HAL Tester application interface. A central dialog box titled "Deck Configuration Editor" is open, showing a table of deck configurations. A red arrow points to the "Fix Slot Alignment" button at the bottom of the dialog.

Output

Inventory Stats:
UNKNOWN slots: 0
EMPTY slots: 3
Hardware status ok.
The kiosk is configured for door sensors.
The kiosk is configured for a VMZ.
WARNING: jobs are currently running or pending.
Boot init ended with status: COMPLETED
Checking for bootstrap init.

Sensors

1 2 3 4 5 6

Read On Off

Movements

Source Deck Slot

Transfer Destination Deck Slot

Go To Put

Get Sync Slot

Transfer

DVD In Slot Vending DVD in Picker

DVD Into Picker Put in Empty Slot

Deck Configuration Editor

Deck #	Y Axis Offset	Slot Width	# Slots	QLM Deck?
1	-20020	166.6667	90	False
2	-64320	166.6667	90	False
3	-108680	166.6667	90	False
4	-153040	166.6667	90	False
5	-197360	166.6667	90	False
6	-241720	166.6667	90	False
7	-286120	166.6667	90	False
8	-377380	166.6667	90	False

Fix Slot Alignment

Other

Put In bin Sync Unknowns Hardware Check

Vertical Slot Test Show Timeouts Read Controller Limits

Camera

Snap Camera Settings and Preview Get and Read

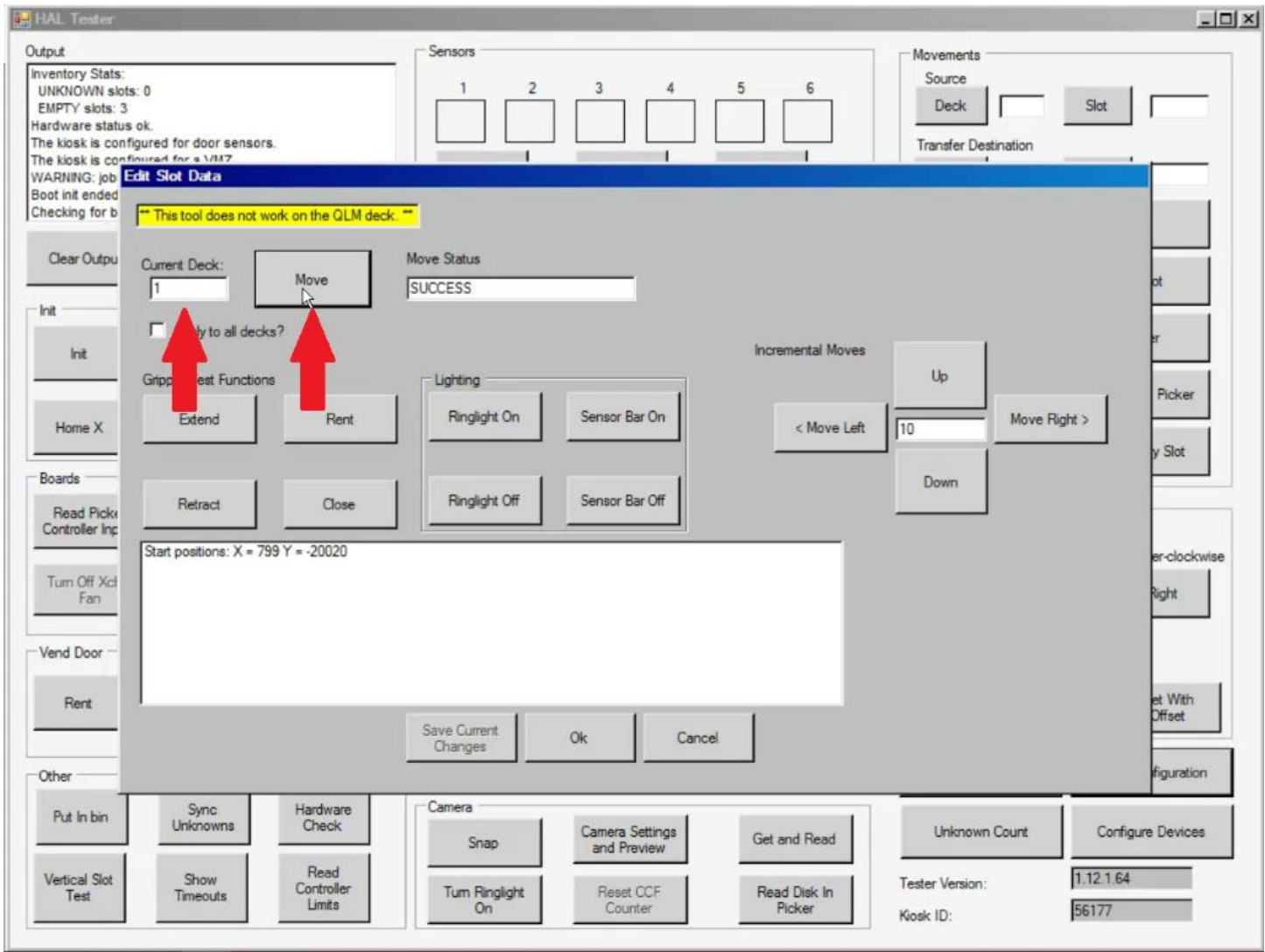
Turn Ringlight On Reset CCF Counter Read Disk In Picker

Tester Version: 1.12.1.64

Kiosk ID: 56177

4. Check Slot Alignment

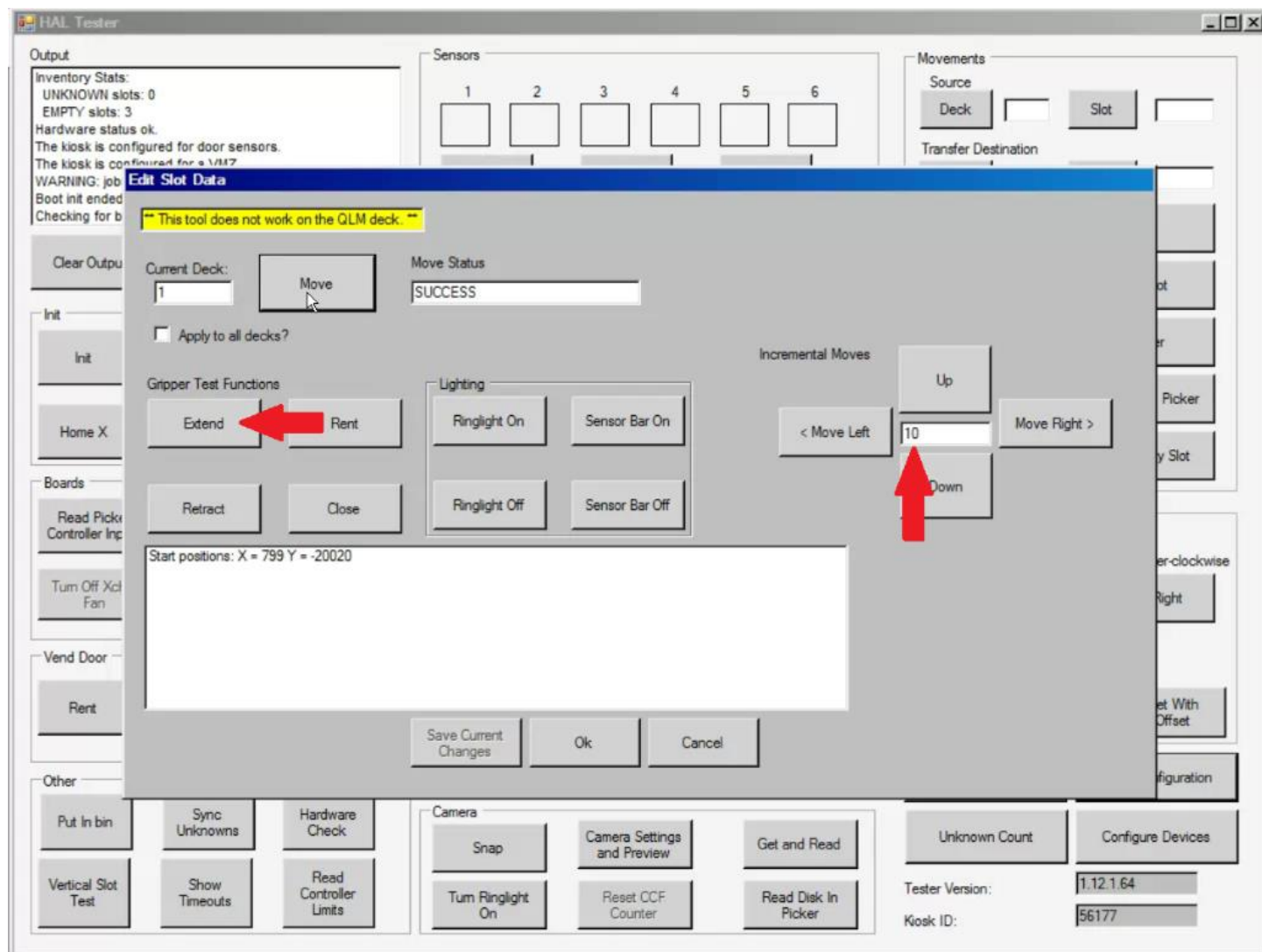
Here we can adjust slot data. Enter the deck you need to go to and click 'move'.



5. Adjust Slot Alignment

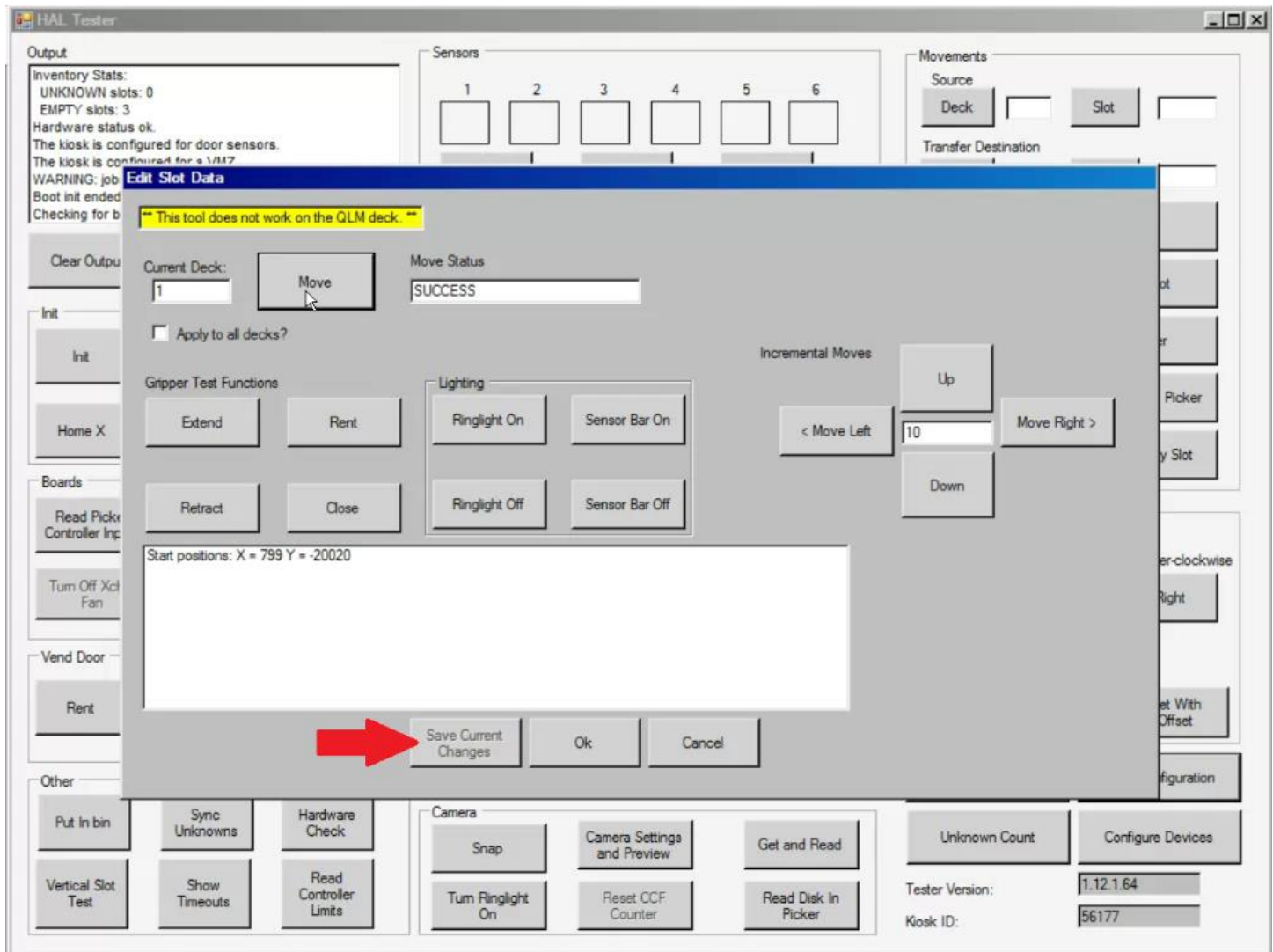
Once arriving at the slot, extend the grippers and look down the picker and decide which way and how much the drum needs to be moved. Type that number into the 'incremental moves' box, click 'move left' or 'move right' depending.

NOTE: Deck 8 will default to slot 2, all other decks are slot 1



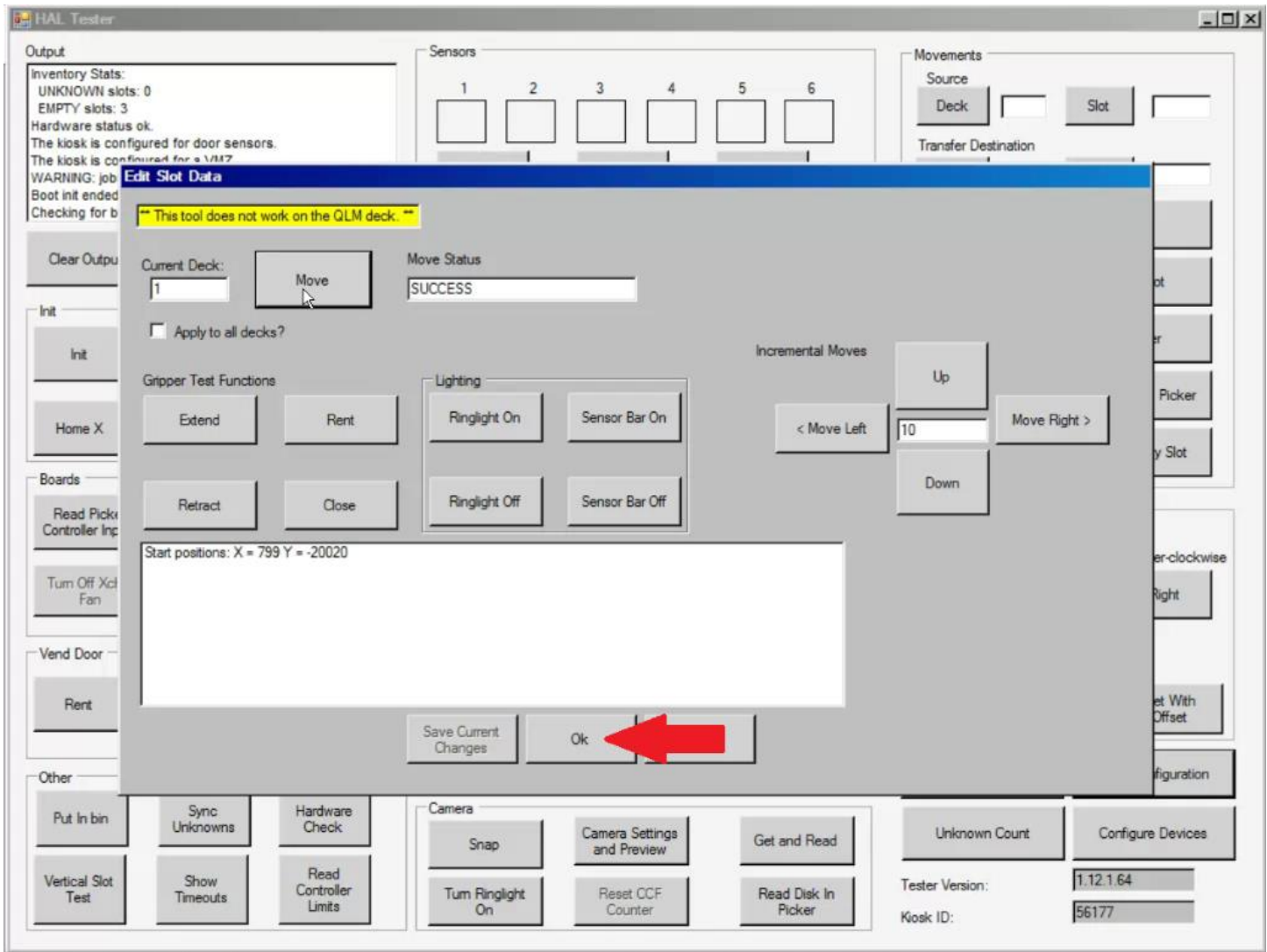
6. Check and Confirm Slot Data

Confirm the slot data is correct with the FST, make further adjustments if needed. Once finished, click 'save current changes'.



7. Repeat Steps 4 – 7 for all Decks that need Adjusting (Note: Deck 8 will default to Slot 2, all other slots default to Slot 1)

8. Exit Slot Data Tool



9. Perform Vertical Slot Test

Repeat process if necessary